



French Bulldog Club of NSW

established 1983 - celebrating 30 years



56th Championship Show Catalogue 5 April 2014


ROYAL CANIN

Judge
Phillip Stemp
Laudernell UK

We greatly appreciate our continued sponsorship from Royal Canin



ROYAL CANIN

FRENCH BULLDOG

A little bundle of muscle & charm

Available in 3kg

ROYAL CANIN

Adult
Over 12 months old - À partir de 12 mois

French Bulldog
Bouledogue Français
Französische Bulldogge - Bulldog Français

BREED HEALTH NUTRITION

IDEAL MUSCLE MASS
HEALTHY SKIN
ODOR REDUCTION

royalcanin.com.au

Sponsors of the French Bulldog Club of NSW for 10 years

PRESIDENT'S WELCOME

Welcome to the French Bulldog Club of NSW 56th Championship Show! 2014 marks the 30th anniversary of the club, what an achievement! To mark this achievement, we fittingly have a breed record entry.

On this special occasion we warmly welcome breed specialist Mr Phillip Stemp to judge our little companions. On behalf of the club I would like to thank Mr Stemp for accepting this appointment and welcome him to our Country and our club. We hope you enjoy our show and your time here in oz.

The day just wouldn't be the same without our wonderful and witty steward Sue Causer and our very efficient DogsNSW Representative Glenda Clifford. Thank you ladies for giving up your time for our club.

The clubs sponsors Royal Canin have once again provided some wonderful product that we all love for in show prizes. Your ongoing support is very much appreciated. The club would like to thank everyone for their support of the club through the show and in particular to those who have travelled from far and wide to be here with us today. Thankyou!!! A big thank you must also to the committee and all the behind the scene members for making this day a successful one.

Have a wonderful day everyone and we look forward to seeing you all again in September.

Debra Brady.

Our Committee

Patrons: Terry Cartwright
Gwen Cartwright

Life Members: Dulcie Partridge
Lil Robinson
Terry Cartwright
Sandra Winter
Liz Davidson

President: Debra Brady
Vice President: Lyn Borg
Secretary & Public Officer: Liz Davidson
Treasurer: Sandy O'Rourke
Show Secretary: Sheridan Ledger
Publicity Officer: Marika Orfanos
Show Manager: Richard Parry
Trophy Steward: Lisa Vassallo

Committee
Karen Hedberg
Tina Werczyk
Alex O'Rourke
Richard Parry
Lisa Vassallo



Proudly
Supporting



SHOW SCHEDULE

Judging will commence with dogs followed by bitches

Classes to be judged – 1, 2, 3, 4, 5, 10, 11, 18

VETERANS PARADE

Veterans will not be eligible for challenge.

BREEDERS GROUP

Minimum number of progeny is 2. Progeny must be entered in the show. Sire is not required to be entered in a General Class.

SIRE'S PROGENY CLASS

Minimum number of progeny is 5 and must each be 3 months of age or over. The exhibits, classed as progeny must be exhibited in at least one general class in the show. The sire does not have to be exhibited at the show.

PROPERTY CLASSES

Best Head ~ Best Gaited ~ Best Brindle Colour ~ Best Fawn Colour ~ Best Pied Markings

DOGS NSW REP - Glenda Clifford

RING STEWARD - Sue Causer

SHOW MANAGER – Richard Parry

TROPHY STEWARD – Lisa Vassallo

PRIZES

General Specials ~ Trophy & Sash, Property Classes ~ Sash

ENTRY FEES

Members \$20 first entry. Subsequent entries \$17, Non members \$20
(includes Dogs NSW levy).

Breeders Group \$5, Sire's Progeny \$5, Property Classes \$5 (one fee per dog, enabling entry into 3 classes).

SHOW RULES & REGULATIONS

This show is conducted under the Rules and Regulations of the RNSWCC Limited. Dogs NSW Wales is a trading name of RNSWCC Limited. A copy of such Regulations may be perused at the Secretaries office.

The Committee reserves the right to alter or amend judging arrangements and to appoint a substitute judge if deemed necessary as prescribed under the RNSWCC Limited Rules & Regulations.

All ribbons, sashes, trophies and prizes must be collected on the day of the show.

Introducing our Judge – Phillip Stemp (UK) Laudernell French Bulldogs



I have owned, shown and bred French Bulldogs for over 20 years, but have been involved in showing dogs much longer. I count myself lucky to have found the French Bulldog breed and as soon as I owned my first Frenchie that was that for me, no other breed compared. I have been actively

involved in the organisation side of dog showing for nearly as long as I have owned dogs. I have been fortunate enough to serve as Chairman, Vice Chairman, Treasurer, Secretary and Show Manager on various show societies and breed clubs. At present I am serving on the committee of French Bulldog Club of England, as Club Show Secretary and am actively involved in the Clubs judging seminars, lecturing and assessing, new judging candidates.

I have been judging French Bulldogs since the early nineties and take this responsibility very seriously, enjoying each appointment equally. I have judged the breed at the highest level in the UK, in Europe and the USA, having recently judged at the French Bulldog Club of America's National show. I love to see how other countries have evolved the breed and how they interpreted their breed standard. I still very much enjoy showing and breeding Frenchies and over the years my dogs have won many, many high awards, something I am very proud of.

Some people may know my name from some of my artwork of French Bulldogs which has been collected all around the world, I hope to bring some prints as awards for some of my principal winners.

I am very much looking forward to visiting your beautiful country and having the pleasure of going over your French Bulldogs and judging them.

Phillip Stemp

Perpetual Trophies

Best In Show - Topette Shield

Runner up Best in Show - Kama Mr Piquet Trophy

Best Baby Puppy in Show - Vanfranhce Trophy

Best Puppy in Show - Darnaway Thundercloud Trophy

Best Junior in Show - Bertie Memorial Trophy

Best Intermediate in Show - Roeburkeley Trophy

Best Australian Bred in Show - Kama Petite Chuckles Trophy

Perpetual Trophies will be on display. Please take a look to see who the previous winners have been!

Donations

Julie & Erin Henville have donated two gorgeous original leadlight works for our BIS and RUBIS winners. Thankyou Julie and Erin.

We have also received most generous donations from **R & S Murphy, Josie Butler, Margaret Clinton, Sandra Winter and Julie and Bernie Payne**. Thankyou everyone!!!

Raffle

Once more we are very lucky to have such great prizes for our raffle. The prizes are on display.

***So don't forget to buy some raffle tickets!
You have to be in it to win it!***

Class Sponsorship

The committee would like to thank those persons/kennels who have sponsored a class in our show. With this type of generosity from our members and friends, we are hoping to be able to continue to invite international French Bulldog specialist to judge at our specialities.

A great many thanks to our sponsors.

Trophy	Sponsor	Dedication
Best in Show	Isobel Harris	
Runner-up Best in Show	French Bulldog Club of Qld	
Challenge Dog	Ross Thomas	
Challenge Bitch	Ross Thomas	
Reserve Challenge Dog	Debra & Scott Brady	In loving memory 'Leroy'
Reserve Challenge Bitch	Debra & Scott Brady	In loving memory 'Chomarnie'
Baby in show	Richard Parry	
Minor in show	Llachar Kennels	
Puppy in show	Kim Moorey	D'Accord Bon Chance - forever in our hearts
Junior in show	Ross Thomas	
Inter in show	Josie Butler	
Ausbred in show	Sheila Roberts	
Open in show	Jacqueline Measure	
Opposite baby	Lynne & Steve Hudson	BISS Ch. EarsRup Le Boof 13 years young and always a baby @ heart

Opposite minor	Mandy Cadd	
Opposite puppy	Marika Orfanos	In loving memory of Buster who made me fall in love with French Bulldogs
Opposite junior	Denise & Stewart Carter	
Opposite intermediate	Josie Butler	
Opposite Ausbred	Denise & Stewart Carter	
Opposite open	Pauline Orfanos	
Breeders Group	R & S Murphy	"Oscar" (Ch Jonhah Sterling Moss) happy in retirement
Sire's progeny	R & S Murphy	"Oscar" (Ch Jonhah Sterling Moss) happy in retirement
Property classes	Frogwyck Kennels	
Neuter in show	Tina Werczyk	Dedicated to 'Anna-Thorin'
Opposite neuter	Tina Werczyk	Dedicated to 'Atlas'

Once again a very BIG 'THANK YOU' to our sponsors!

Merchandise

The club has purchased a wonderful assortment of new merchandise from all over the world. There are some wonderful items available at reasonable prices. We now have eftpos facilities available for all your purchases. Make sure you get in early as the items are sure to sell quickly!



Proudly
Supporting



PAST WINNERS THE FRENCH BULLDOG CLUB OF NSW Inc CHAMPIONSHIP**SHOWS**

SHOW	BEST EXHIBIT	RUNNER-UP	JUDGE
May 1986	Ch Kama Petite Eva (B) (Cartwright)	Tenaflly Elena (B) (Mileham)	Andrew Thomson (UK)
Oct 1986	Ch Sovereign of Selholme (Imp UK) (D) (Miller/Partridge)	Avonmist Madam Beauty (B) (Partridge)	Wes Stacey (NSW)
May 1987	Ch Quais Sweet Josephine (B) (Mileham)	Ch Apocodeodar His Lordship of Tenaflly (Imp UK) (D) (Mileham)	Valerie Tourelle (NZ)
Oct 1987	Ch Tenaflly Hot Biscuit (Imp UK) (D) (Miller/Partridge)	Ch Kama Petite Eva (B) (Cartwright)	Stan Rose (NSW)
May 1988	Ch Tenaflly Hot Biscuit (Imp UK) (D) (Miller/Partridge)	Ch Sovereign of Selholme (Imp UK) (D) (Miller/Partridge)	George Holloway (NSW)
Oct 1988	Ch Tenaflly Hot Biscuit (Imp UK) (D) (Miller)	Ch Topette Bubbles (B) (Cartwright)	Wendye Slatyer (NSW)
May 1989	Ch Kurrallwyn Fifi (B) (Davidson/Rosser)	Ch Kama Petite Eva (B) (Cartwright)	John Shepherd (NSW)
Sept 1989	Ch Tenaflly Hot Biscuit (Imp UK) (D) (Miller)	Ch Sovereign of Selholme (Imp UK) (D) (Miller)	Joan Fieldhouse (NSW)
May 1990	Ch Quais Milord Humphrey (D) (Mileham)	Topette Toby Jug (D) (Cartwright)	Charles Satchell (UK)



SHOW	BEST EXHIBIT	RUNNER-UP	JUDGE
Oct 1990	Ch Tenaflly Hot Biscuit (Imp UK) (D) (Miller)	Ch Kurrallwyn Fifi (B) (Davidson/Rosser)	Ted Pickering (NSW)
May 1991	Ch Quais Milord Humphrey (D) (Mileham)	Ch Topette Bubbles (B) (Cartwright)	W Stevenson (NSW)
Oct 1991	Ch Quais Milord Humphrey (D) (Mileham)	Ch Topette Black Beauty (D) (Burke)	Tony Valli (NSW)
May 1992	Ch Topette Black Beauty (D) (Burke)	Ch Tenaflly Hot Biscuit (Imp UK) (D) (Miller)	Jack Wray (Vic)
Oct 1992	Topette Bussy Malone (D) (Cartwright)	Ch Mjosa Sylkaz Chloe (B) (Power)	Cyril Bernfield (USA)
May 1993	Ch Ravanian Royal Ramis (D) (McKenzie)	Ch Topette Bubbles (B) (Cartwright)	Dennis Glackin (NSW)
Oct 1993	Ch Kama Mr Cody (D) (Partridge)	Ch Macbai Bedazzle Em (B) (Kruse)	Wayne Burton (NSW)
May 1994	Ch Tenaflly Hot Biscuit (Imp UK) (D) (Miller)	Ch Kama Petite Sibel (B) (Partridge)	Joan Fieldhouse (NSW)
Oct 1994	Ch Kama Mr Lautrec (D) (Roberts)	Ch Kama Mr Cody (D) (Partridge)	David Thorpe (NSW)
May 1995	Ch Topette Black Beauty (D) (Burke)	Roseblossom Vivianne (B) (Partridge)	Jan Kirin (ACT)
Oct 1995	Ch Mjosa Sylkaz Chloe (B) (Meredith/McClintock)	Ch Laura-Ashley Du Coël (B) (Imp NDL) (Naughton)	Eric Singer (Vic)

SHOW	BEST EXHIBIT	RUNNER-UP	JUDGE
April 1996	Ch Kama Mr Fidio (D) (Partridge)	Ch Jemhiede Picasso (D) (Miller)	Dr Goran Bodegard (Swe)
Oct 1996	Ch Kama Petite Ebeneë (B) (Spencer)	Ch Mjosa Syldaz Chloe (B) (Meredith)	Carol Baker (NSW)
April 1997	Gr Ch Topette Big Mac (D) (Davis)	Imaluv Simply The Best (D) (Meredith)	Barbara Skilton (NSW)
Oct 1997	Ch Kama Petite Ebeneë (B) (Spencer)	Ch Hushan Grizzly Bear (D) (Payne)	Carolyn Butler (NSW)
April 1998	Ch Kama Petite Ebeneë (B) (Spencer)	Ch Hushan Grizzly Bear (D) (Payne)	Ron Besoff (NSW)
Oct 1998	Hushan Olivia Be (B) (Butler)	Ch Jemhiede The Warlord (D) (Miller)	Kevin Perceval (NSW)
May 1999	Ch Hushan Grizzly Bear (D) (Payne)	Ch Kama Petite Hanna (B) (Partridge)	Jim Hayward (NSW)
Oct 1999	Ch Hushan Olivia Be (B) (Butler)	Ch Kama Petite Ebeneë (B) (Spencer)	Ken Hodges (NSW)
April 2000	Ch Jurindoe Taraki Hi (B) (Parker)	Ch Dalrite Magylas Me Dad (D) (Gray)	Charles Satchell (UK)
Oct 2000	Ch Hushan Olivia Be (B) (Butler)	Afflexian Lady Minette (B) (Miller)	Peter Minney (NSW)
Oct 2001	Ch D'Accord D'Amour (B) (Davidson/Rosser)	Kama Petite Deandra (B) (Payne)	Clayton Haviland IV (USA)
April 2002	Ch Shi-Fra-Sa's The Viking Hanahaus (Imp Nwy) (D) (Davidson/Rosser)	Topette Lisa Cheese (B) (Cartwright)	Sue Butler (NSW)



SHOW	BEST EXHIBIT	RUNNER-UP	JUDGE
Oct 2002	Ch D'Accord Le Roi (D) (Brady)	Ch D'Accord D'Amour (B) (Davidson/Rosser)	Terry Cartwright (NSW)
April 2003	Ch D'Accord D'Amour (B) (Davidson/Rosser)	Ch Ritaz Divine Miss D (B) (Davis)	Maurice Le Cussan (NSW)
Oct 2003	Ch D'Accord Dame de Coeur (B) (Davidson/Rosser)	Ch Shi-Fra-Sa's The Viking Hanahaus (Imp Nwy) (D) (Davidson/Rosser)	Wes Stacey (NSW)
April 2004	Roeburkeley Ring King (D) (Burke)	Ch Topette Lisa Cheese (B) (Cartwright)	Arnold Hendriks (NDL)
Sept 2004	Ch Jurindoe Sebastes Goodie (D) (Meredith)	Zurk Candice Bear (B) (Kruse)	Chris Jefferies (NZ)
April 2005	Ch Earsrup Le Boof (D) (Hudson)	Ch Midaswell Lolita (B) (Thomas)	Jill Keates (UK)
Sept 2005	Ch D'Accord Beau Geste (D) (Paine & Ledger)	Ch Zurk Cassandra Bear (B) (Kruse)	Kym Prendergast (WA)
April 2006	Ch D'Accord D'Amour (B) (Davidson/Rosser)	Ch D'Accord le Roi (D) (Brady)	Kay Eldred (NSW)
Sept 2006	Ch D'Accord Ruby Tuesday (B) (Davidson/Rosser)	Ch D'Accord Beau Geste (D) (Paine & Ledger)	Penny Rankine- Parsons (UK)
April 2007	Pendragan Ellfor Leather (D) (Rosser Davidson Hedberg & O'Rourke)	Pendragan Cat Tracker (B) (Edmunds)	Christina Rafton (NSW)
Sept 2007	Frogwyck Stella Luna (B) (Borg)	D'Accord Tatiana (B) (Brady)	Wendy Slatyer (NSW)
April 2008	Ch Pendragan Ellfor Leather (D) (Rosser Davidson Hedberg & O'Rourke)	Gr Ch Isidore-Ignatius Beau de Soleure (imp Sui) (D) (Rosser Davidson Hedberg & O'Rourke)	John Shepherd (NSW)



SHOW	BEST EXHIBIT	RUNNER-UP	JUDGE
Sept 2008	Ch D'Accord Couleur D'Automne (B) (Davidson/Rosser)	Hushan Miss Arpege (B) (Payne)	Peter Warby (NSW)
April 2009	D'Accord Bergerac (D) (Davidson/Rosser)	Ch Jonhah Stirling Moss (D) (Skinner)	David Strachan (NSW)
Sept 2009	Ch Lepride Dita Von Tesse (B) (Skinner)	Ch Pendragan in Toto (D) (Thorpe/Daidone)	Melanie Reed Peck (UK)
April 2010	Ch Pendragan Ellfor Leather (D) (Rosser Davidson Hedberg & O'Rourke)	Ch Pendragan in Toto (D) (Thorpe/Daidone)	Sylvia Crozier (NSW)
Sept 2010	D'Accord Miss Moneypenny (B) (Davidson/Rosser)	Ch Oriana Janoel (Imp Cz) (B) (Swift)	Yannina Smith (TAS)
April 2011	Ch Frogwyck Andromeda (B) (Borg)	Frogwyck Drummer Boy (D) (Borg)	Glen Dymock (UK)
Sept 2011	Ch Belboulecan Casino Royale (D) (Davidson)	Emorette Miss Eadee (B) (McAndrew)	Ian Hinde (VIC)
April 2012	Ch Keoiloa Happy Days (D) (Stevens)	D'Accord La Vie En Rose (B) (Davidson/Rosser)	Ken Winter (WA)
Sept 2012	Pendragan Scintilla(B) (Thorpe/Daidone)	Ch Amindi Chuck Berry Ison Top (D) (Smith)	Carole Long (NZ)
April 2013	Ch Emorette Rolls Royce (D) (McAndrew)	Ch Frogwyck Margeaux (B) (Borg)	Barbara Pallasky (Germany)
Sept 2013	Ch Emorette Miss Eadee (B) (McAndrew)	Ch D'Accord Valentino (D) (Davidson/Rosser)	Virginia Rowland (USA)

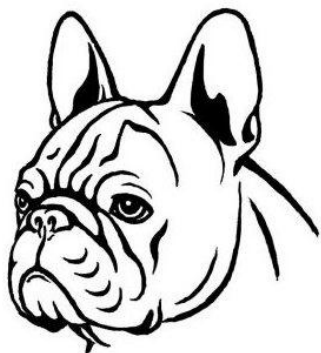


Breed Standard – French Bulldog (last updated 22 May 2009)

General Appearance: Sturdy, compact, solid, small dog with good bone, short, smooth coat. No point exaggerated, balance essential. Dogs showing respiratory distress highly undesirable.

Characteristics: Full of courage, yet with clown-like qualities. Bat ears and short tail characteristic features of the breed.

Temperament: Vivacious, deeply affectionate, intelligent.



Head and Skull: Head square in appearance and in proportion to dog's size. Skull nearly flat between ears, domed forehead. The skin covering the skull and forehead should be supple enough to allow the dog to show facial expression. Well defined muzzle, broad, deep and set back, muscles of cheeks well developed. Stop well defined. Lower jaw deep, square, broad, slightly undershot and turned up. Nose black and wide, relatively short, with open nostrils and line between well defined. Lips black, thick, meeting each other in centre, completely hiding teeth. Upper lip covers lower on each side

with plenty of cushion, never so exaggerated as to hang too much below level of lower jaw.

Eyes: Preferably dark and matching. Moderate size, round, neither sunken or prominent, showing no white when looking straight forward; set relatively wide apart and on the same level as the stop.

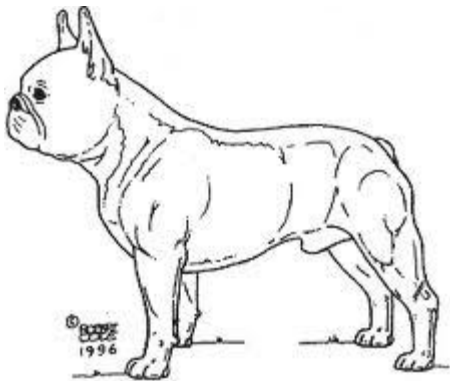
Ears: "Bat ears", of medium size, wide at base, rounded at top; set high, carried upright and parallel, a sufficient width of skull preventing them being too close together; skin soft and fine, orifice as seen from the front, showing entirely. The opening to the ear canal should be wide and open.

Mouth: Slightly undershot. Teeth sound and regular, but not visible when the mouth is closed. Tongue must not protrude.

Neck: Powerful, well-arched and thick, but not too short.

Forequarters: Legs set wide apart, straight boned, strong, muscular and short.

Body: Cobby, muscular and well rounded with deep, wide brisket and ribs well sprung.



Strong, gently roached back. Good cut up.

The body while broader at the shoulders should narrow slightly beyond the ribs to give definition to the relatively short, thick, strong, muscular loin.

Hindquarters: Legs strong, muscular and relatively longer than forelegs, with moderate angulation. Hocks well let down.

Feet: Small, compact and placed in continuation of line of leg, with absolutely sound pasterns. Hind feet rather longer than

the fore-feet. Toes compact; well knuckled; nails short, thick and preferably black.

Tail: Undocked, short, set low. Thick at root, tapering quickly towards tip, preferably straight and long enough to cover anus. Never curling over back no carried gaily.

Gait/Movement: Free and flowing. Soundness of movement of the utmost importance.

Coat: Texture fine, smooth, lustrous, short and close.

Colour: Brindle, pied or fawn. Tan, mouse and grey/blue highly undesirable.

(1) Brindle - a mixture of black and coloured hairs. May contain white provided brindle predominates.

(2) Pied - white predominates over brindle. Whites are classified with peds for show purposes; but their eyelashes and eyerims should be black. In peds the white should be clear with definite brindle patches and no ticking or black spots.

(3) Fawn - may contain brindle hairs but must have black eye lashes and eye rims.

Sizes: Ideal weight:

Dogs 12.5 kgs (28 lbs)

Bitches 11 kgs (24 lbs)

Soundness not to be sacrificed to smallness.

Faults: Any departure from the foregoing points should be considered a fault and the seriousness with which the fault should be regarded should be in exact proportion to its degree and its effect upon the health and welfare of the dog.



Classes

Class 1. Baby Puppy Dog

Entries 6

1. **BRUIN BOUND FOR GLORY** 2100394707 **DOB:** 5/11/2013
Sire: Ch Bullecourt Digger **Dam:** Ch Rishale Cressida (imp UK)
Breeder: Mr JJ & Mrs RJ Klok **Owner:** Donoso-Lopez/Gardiner/Klok
2. **JONHAH TREVATROUBL** 2100398149 **DOB:** 29/11/2013
Sire: Ch Emorette Rolls Royce **Dam:** Ch Jonhah Tilly Devine
Breeder/Owner: S Ledger & D Paine
3. **LLACHAR MASTER OF DISGUISE** 4100235149 **DOB:** 7/11/2013
Sire: Ch Llachar Irrational Move **Dam:** Llachar J'Aime La Nuit
Breeder/Owner: L & K McClelland
4. **BULLECOURT ENDEAVOUR** 3100299342 **DOB:** 5/01/2014 **Absent**
Sire: CH Bullecourt Dignity **Dam:** CH Bullecourt Spirit
Breeder/Owner: A McInnes
5. **BULLWOOD BRILLIANT BASIL** 3100027305 **DOB:** 30/11/2013
Sire: Ch Amindi Chuck Berry Ison Top **Dam:** Ch Chrishell Black Perle (imp NZ)
Breeder: T Donslov **Owner:** S Smith
6. **BREBBIE NAPOLEON B** 2100398598 **DOB:** 31/10/2013
Sire: Ch Hushan Dana Sargan **Dam:** Tykabul Buttons and Bows
Breeder/Owner: B Watson

1st**2**..... 2nd**5**..... 3rd**6**.....



Class 3. Puppy Dog

Entries 3

7. **VANFRAHNCE BENTLEY** 2100389532 **DOB:** 28/06/2013
Sire: Ch Emorette Rolls Royce **Dam:** Vanfrahnce Cheyenne
Breeder/Owner: D Brady
8. **KENISO BORIS** 210038416 **DOB:** 6/05/2013
Sire: Ch D'Accord Frederic **Dam:** Ch Keniso Pollyanna
Breeder/Owner: I Harris
9. **KIANGSI SHOW EM YOUR GUNS** 5100077141 **DOB:** 3/06/2013
Sire: Gr Ch Pendragan Showem How **Dam:** Kiangsi Yeah Baby She's Got It
Breeder: A Cadd **Owner:** S Roberts & A Cadd

1st7..... 2nd9..... 3rd8.....

Notes



Class 4. Junior Dog

Entries 7

10. **AM CH BARING NORDS THRYGGVE VIKING** NP35031901 **DOB:** 10/01/2013
Sire: Multi Ch Bulliniums Highlife **Dam:** SE I CH Baring Nords Wera
Breeder: P & T Forss **Owner:** A Cadd

11. **CH BOUDIN WOOP DE WOOP** 2100375243 **DOB:** 1/12/2012 **Absent**
Sire: Gr Ch Jonhah Taj Burrows **Dam:** Boudin Cumbrian Lass
Breeder: J Butler **Owner:** K Cassidy

12. **TYKABUL WICKED INK** 2100380637 **DOB:** 9/03/2013
Sire: Ch Keoiloa Happy Days **Dam:** Ch Brebbie Bold As Brass
Breeder/Owner: J Lalor

13. **CH BULLECOURT DIGNITY** 3100280615 **DOB:** 11/11/2012
Sire: Ch Bullecourt Digger **Dam:** Twinhoe Adelaide at Movern (Imp UK)
Breeder/Owner: A McInnes

14. **CH EMORETTE BARNES STORMING** 2100373463 **DOB:** 9/11/2012
Sire: Am Ch & Ch Daulokke's Jargon De Luc (Imp Den) **Dam:** CH. Emorette Maggie May
Breeder: K McAndrew **Owner:** B McWatt

15. **TRICIBWTHYN AXEL** 2100379312 **DOB:** 11/02/2013
Sire: Sup Ch D'Accord Jean Claude **Dam:** Tricibwthyn Edna
Breeder/Owner: R Parry

16. **CH DACCORD VALENTINO** 2100379742 **DOB:** 14/02/2013
Sire: Gr Ch Isidore Ignatius Beau De Soleure (Imp Sui) **Dam:** Castlehaines Charisma (Imp UK)
Breeder/Owner: L Davidson & M Rosser

1st **13** 2nd ... **16** 3rd **14**



Class 5. Intermediate Dog**Entries 9**

17. **WILDBUNCH GIORGIO ARMANI** 2100345985 **DOB:** 26/07/2011 **Absent**
Sire: Ch Keoiloa Happy Days **Dam:** Tykabul Chantilly Lace
Breeder/Owner: L & K Ballard
18. **CH LECARBUL LOUIE LE GRANDE** 2100354207 **DOB:** 29/12/2011
Sire: Ch Lavishcav Terry Bear **Dam:** Chocos Delight
Breeder/Owner: S & D Carter
19. **CHICCHIEN ARCHER** 2100366390 **DOB:** 26/6/2012
Sire: Ch Pendragan Quiet Riot **Dam:** Chicchien Fleur De Soleil
Breeder/Owner: R Doherty
20. **CH BULLECOURT BOMBADIER** 3100255772 **DOB:** 1/5/2011 **Absent**
Sire: Ch Belboulecan Stargazer Zodiac (Imp Can) **Dam:** Twinhoe Adelaide at Movern (imp UK) **Breeder:** A McInnes **Owner:** A McInnes & I Harris
21. **CH JONHAH JIMMIE JOHNSON** 2100368085 **DOB:** 11/8/2012
Sire: Am Ch Ch Daulokke's Jargon Du Luc (Imp Den) **Dam:** Jonhah Stephie Gilmour
Breeder/Owner: S Ledger & D Paine
22. **CH LLACHAR JE SUIS UN FANTOME** 4100210031 **DOB:** 13/2/2012 **Absent**
Sire: Embolden Rip Van Winkle **Dam:** Ch Tykabul Chiraz Pour Moi
Breeder/Owner: L & K McClelland
23. **TRICIBWTHYN LLAN DEWI** 2100362903 **DOB:** 18/5/2012
Sire: Ch Frogwyck Flash Harry **Dam:** Ch Tricibwthyn Peggy **Breeder/Owner:** R Parry
24. **CH HUSHAN DANA SAGAN** 2100370862 **DOB:** 7/8/2012
Sire: Ch Earsrup Call Me Elmo **Dam:** Hushan Miss Victory
Breeder/Owner: B & J Payne
25. **MELLALLA CHUCK NORRIS** 4100209619 **DOB:** 31/1/2012
Sire: Ch Amindi Chuck Berry Ison Top **Dam:** Ch Meralla Caramel Kiss
Breeder: J Bill **Owner:** S Smith

1st**25**..... 2nd**23**..... 3rd**21**.....Proudly
Supporting

Class 10. Aust. Bred Dog

Entries 11

26. **VANFRAHNCE KASPIAN** 2100330208 **DOB:** 20/10/2010 **Absent**
Sire: Brigantia Odysseus **Dam:** Vanfrahnce Cheyenne
Breeder/Owner: D Brady
27. **MONBOELLA ATTICUS FINCH** 2100374620 **DOB:** 16/10/2012
Sire: Sup Ch D'Accord Jean Claude **Dam:** Pendragan Queen of Tarts
Breeder/Owner: M Knight
28. **TYKABUL WIZZ KID** 2100334226 **DOB:** 19/01/2011
Sire: Monitaps Ozzie The Wizard (Imp Can) **Dam:** Ch Brebbie Bold As Brass
Breeder: J Lalor **Owner:** S Long & J Lalor
29. **ODINSKINGDOM SISCO** 2100341604 **DOB:** 22/05/2011 **Absent**
Sire: Ch Keoila Happy Days **Dam:** Valryck Sasha
Breeder/Owner: D & N Mackie
30. **CH LLACHAR IRRATIONAL MOVE** 4100185183 **DOB:** 1/12/2011
Sire: Ch Llachar Ghosts of Camelot **Dam:** Ch Llachar Flight Ethereal
Breeder/Owner: L & K McClelland
31. **CH EMORETTE ALFA ROMEO** 2100348975 **DOB:** 30/09/2011
Sire: Ch Belboulecan Casino Royale (Imp Can) **Dam:** Ch Emorette Maggie May
Breeder: K McAndrew **Owner:** B McWatt
32. **CH D'ACCORD FREDERIC** 2100339933 **DOB:** 4/3/2011
Sire: Ch Pendragan Ellfor Leather **Dam:** Castlehaines Charisma (Imp UK)
Breeder/Owner: M Rosser & L Davidson
33. **CH BULLECOURT SOVEREIGN** 3100280616 **DOB:** 11/11/2012
Sire: Ch Bullecourt Digger **Dam:** Twinhoe Adelaide at Movern (Imp UK)
Breeder: A McInnes **Owner:** V Scott
34. **SUP CH PENDRAGAN IN TOTO** 2100270640 **DOB:** 11/3/2008
Sire: Ch Pendragan Ellfor Leather **Dam:** Pendragan Coco Chanel
Breeder: K. Hedberg & S O'Rourke **Owner:** D & L Thorpe & J Daidone



35. **CH OPALGUARD THE EGO HAS LANDED** 2100336802 **DOB:** 21/02/2011
Sire: Ch Edelweis For Palevyh Bulldogov (Imp USA) **Dam:** Ch Glenlee Eternal Secret (Imp UK)
Breeder: N & K Kenwick **Owner:** T Wedesweiler
36. **CH ELEVAGE SIR GALAHAD** 3100257503 **DOB:** 3/5/2011
Sire: Twilight Hell boy (Imp NZ) **Dam:** Bonzabull Bella Trix
Breeder: L McPhail **Owner:** S West

1st ...**32**..... 2nd ...**30**..... 3rd ...**27**.....

Class 11. Open Dog

Entries 10

37. **GR CH PENDRAGAN SHOWEM HOW** 2100354493 **DOB:** 25/12/2011
Sire: Ch Pendragan Ellfor Leather **Dam:** Ch Pendragan Oops A Daisy
Breeder: S O'Rourke & K Hedberg **Owner:** S O'Rourke, K Hedberg & A Cadd
38. **TOPETTE JON LUC** 2100365566 **DOB:** 20/6/2012
Sire: Hushan Karbe Kohl **Dam:** Topette Lady Abigail
Breeder/Owner: T & G Cartwright
39. **CH BELBOULECAN CASINO ROYALE (Imp CAN)** UJ233454 **DOB:** 5/5/2008
Sire: Ch Felipe Dell'Oldoinyo Lengai **Dam:** Belboulecan Stargazer Zenith **Absent**
Breeder: Dr D Fischler **Owner:** M Rosser & E Davidson
40. **CH PENDRAGAN QUIET RIOT** 2100337677 **DOB:** 11/3/2011
Sire: Pendragan Original Sin **Dam:** Ch Pendragan Chase the Wind
Breeder: K Hedberg & S O'Rourke **Owner:** C Frazer
41. **CH & UK CH SARABAR CONTINENTAL AFFAIR AT GLENLEE (Imp UK)**
3673CU **DOB:** 28/06/2008 **Sire:** UK Ch Friend De La Parure Of Kingfriend **Dam:** UK Ch Glenlee Indian Dreammaker At Sarabar **Breeder:** B & S Smith **Owner:** K & N Kenwick

42. **CH EMORETTE ROLLS ROYCE** 2100348974 **DOB:** 30/9/2011
Sire: Ch Belboulecan Casino Royale (Imp Can) **Dam:** Ch Emorette Maggie May
Breeder/Owner: K McAndrew
43. **CH & AM CH CHFABELHAFT ROBOBULL SMOKIN' HOT** NP29544201
DOB: 20/6/2011 **Sire:** Am Ch Robobull Fabelhaft Xcelsior
Dam: Am Ch Fabelhaft Kat'Nahot Tin Roof
Breeder: S Luedde/J Dalton **Owner:** McClelland/Dalton
44. **CH AMINDI CHUCK BERRY ISON TOP** 3100238978 **DOB:** 28/4/2010
Sire: Ch Carrski Orrinshire **Dam:** Theano Blyth Spirit **Breeder/Owner:** S Smith
45. **CH KEOILOA HAPPY DAYS** 2100307804 **DOB:** 16/10/2009
Sire: Monitaps Ozzie The Wizard (imp Can) **Dam:** Tykabul Blanche L Etoile
Breeder/Owner: K Stevens
46. **CH FERRARI DE HUNTERBULL (Imp Spain)** LOE1761987 **D.O.B:** 7/9/2010
Sire: Spa Ch Naif De Tameran (Esp) **Dam:** Givenchy De La Parure (Deu)
Breeder: E Carballar **Owner:** J Shaw & D Swift

1st**43**..... 2nd ...**40**..... 3rd ...**41**.....

Challenge Dog ...**32**.....

Reserve Challenge Dog**13**.....

In Memory

Last year we said goodbye to Rose Cannon, a founding member of the club and one of the breed's greatest supporters.



Despite living in far north Queensland, Rose kept in close contact with her Sydney friends. Rose had no children, but her bullies and frenchies were always the love of her life and she proudly campaigned both breeds for over 30 years. Rose enjoyed a long and successful time in showing her dogs. It was a big event in her year to come down to Sydney for Sydney Royal and for the Easter Specialty shows. She had a

wonderful way with her dogs, they were always in beautiful condition and many lived past fifteen years of age, which is quite a feat when considering Townsville's climate.

Rose is now at peace and will always be remembered with fondness by her many friends.

Veterans Parade

Exhibit A: D'Accord Madame Lisette (Born 27 January 2001)

Lizzie was kindly sold to us by Liz Davidson and Micahel Rosser as a 3 month old pup, for which we were very grateful. She only had a short showing career as she much preferred to sit on your lap and was our house dog. She is very special to us and just loves to please. We mated her and the morning she was due we woke to find she had self-whelped 4 puppies. They aren't supposed to do that! All were fine. She has been our most loved frenchie for these 13 years and likes to go out on days like today! (If it's not too wet that is!)



Exhibit - B: Neut Ch Rischale Aretha At Morvern (imp UK) (Born 29 July 2006)

Evie is the wonderful dam of UK Ch Morvern Frank at LaBanjo(UK), BOB at Crufts 2012, Ch Bullecourt Spirit, my first Australian Champion; Ch Bullecourt Digger and Bullecourt Poppy.



She made the long flight to Australia from the UK in July 2010.

I am extremely proud of the puppies she has produced, she has given me a wonderful foundation in Australia.

Through Ch Bullecourt Digger she is the grand dam of CH's Bullecourt Sovereign and Dignity.

She is great grand dam to The Bruin litter - Ambassador, Andre and Amazing Grace; and Spirit and Poppy's litters born this year.

Evie has the sweetest nature, and has been an absolute blessing when rearing her puppies. She has the most perfect temperament and nature, and is passing it onto her grand kids!

Evie is a striking tiger brindle, and now a very sound and active veteran.

She completed her neuter champion title in 2013, along the way winning 8 Neuter in Group awards.

We are very proud of our "Evie".



Exhibit - C: Ch. Pendragan Chase The Wind (Born 25 February 2006)

Sire: Gr Ch Isidore Ignatious Beau de Soleure

Dam: Daccord Puzzle Pied



Beaches, so called as a puppy as she bore a remarkable resemblance to a beached whale although in later life she lived up to the "chase the wind" name.

Beaches was one of the Pendragan C litter a very successful litter both in the ring and in breeding. She is the mother of the infamous Jellybean and more recently Ch Pendragan Quiet Riot and Pendragan Queen of Tarts.

Beaches shares matriarchal duties with her mother, Puzzle and is quite happy to assist with nanny duties when required.

Class 1a Baby Puppy Bitch**Entries 9**

47. **KIANGSI SHOWEM CHEERSWITH MOET** 5100079604 **DOB:** 5/01/2014
Sire: Gr Ch Pendragan Showem How **Dam:** Francina De Karencaba(imp Esp)
Breeder/Owner: A Cadd **Absent**
48. **KIANGSI SHOWEM HOWTO CELEBRATE** 5100079605 **DOB:** 5/01/2014
Sire: Gr Ch Pendragan Showem How **Dam:** Francina De Karencaba(imp Esp)
Breeder/Owner: A Cadd
49. **CHICCHIEN CIEL** 2100398409 **DOB:** 25/11/2013
Sire: Perreux Brigadier **Dam:** Chicchien Parfait Ange
Breeder/Owner: R Doherty
50. **BIGPAW DARK MOMENT** 2100399039 **DOB:** 18/12/2013
Sire: Ch Carrski Finchs Image **Dam:** Eshad Country Girl
Breeder: K Beale **Owner:** J Lalor
51. **LLACHAR MYSTICAL KESA** 4100235153 **DOB:** 7/11/2013
Sire: Ch Llachar Irrational Move **Dam:** Llachar J'Aime La Nuit (AI)
Breeder/Owner: L & K McClelland
52. **BULLECOURT BEAUTY** 3100299340 **DOB:** 5/01/2014
Sire: Ch Bullecourt Dignity **Dam:** Ch Bullecourt Spirit
Breeder/Owner: A McInnes
53. **BOROCCABULL JUST CHARLI** 2100396449 **DOB:** 20/11/2013
Sire: Ch Emorette Rolls Royce **Dam:** Ch Boroccabull Bindi Eye
Breeder/Owner: J Vassallo
54. **BOROCCABULL DAISY BY MARC** 2100396446 2100396449 **DOB:** 20/11/2013
Sire: Ch Emorette Rolls Royce **Dam:** Ch Boroccabull Bindi Eye
Breeder/Owner: J Vassallo
55. **BOROCCABULL CHRISTIAN DIOR** 2100396448 **DOB:** 20/11/2013
Sire: Ch Emorette Rolls Royce **Dam:** Ch Boroccabull Bindi Eye
Breeder/Owner: J Vassallo

1st**48**..... 2nd**51**..... 3rd**52**..... 4th**53**.....



Proudly
Supporting



Class 2a Minor Puppy Bitch

Entries 3

56. **CHICCHIEN VALENTINA** 2100393681 **DOB:** 21/09/2013
Sire: Multi Ch Vicking Du Fiacre De Montparnasse **Dam:** Chicchien Fleur De Soleil
Breeder/Owner: R Doherty
57. **LLACHAR LOVER OF THE LIGHT** 4100232699 **DOB:** 14/09/2013
Sire: Ch & Am Ch Fabelhaft Robobull Smokin' Hot **Dam:** Ch Llachar Flight Ethereal
Breeder/Owner: L & K McClelland
58. **ODINSKINGDOM LA DI DA** 2100390879 **DOB:** 11/08/2013
Sire: CH Tykabul Ming Dynasty **Dam:** Odinskingdom Amorette
Breeder: D & N Mackie **Owner:** K Stevens

1st**56**..... 2nd**57**..... 3rd**58**.....

Notes



Class 3a Puppy Bitch**Entries 6**

59. **ZANZEBERN ISZABELLA** 2100389857 **DOB:** 27/06/2013 **Absent**
Sire: Ch & Am Ch Daulokke's Jargon De Luc (imp Den) **Dam:** Ch & Am Ch Exotic Mia De Elka Gyvbes Zyme (imp Ltu) **Breeder:** N Lenon **Owner:** G Bekachvili
60. **VANFRAHNCE DAKOTA** 2100389533 **DOB:** 28/06/2013
Sire: Ch Emorette Rolls Royce **Dam:** Vanfrahnce Cheyenne
Breeder/Owner: D Brady
61. **LECARBUL LA PETITE MYSTIQUE** 2100386907 **DOB:** 17/06/2013
Sire: Ch Lecarbul Louie Le Grande **Dam:** Fleursoliel Madeline
Breeder: S & D Carter **Owner:** K Cassidy **Absent**
63. **EMORETTE FLEUR DE JASMIN** 2100386698 **DOB:** 7/05/2013
Sire: Multi Ch Daulokke's Que Vadis (Den) **Dam:** Ch Emorette Miss Eadee
Breeder/Owner: K McAndrew
64. **EMORETTE EADEE MA MERE** 2100386699 **DOB:** 9/05/2013
Sire: Multi Ch Daulokke's Que Vadis (Den) **Dam:** Ch Emorette Miss Eadee
Breeder: K McAndrew **Owner:** B McWatt
65. **HUSHAN VANITY FAIR DAULOKKE** 2100388650 **DOB:** 2/07/2013
Sire: Ch & Am Ch Daulokke's Jargon De Luc (imp Den) **Dam:** Ch Hushan Miss Victory
Breeder/Owner: B & J Payne

1st **64**..... 2nd ... **63**..... 3rd ... **60**.....



Class 4a Junior Bitch

Entries 11

- 65a. FROGWYCK VERONICA** 2100007017 **DOB:** 15/11/2012
Sire: Ch Bullecourt Bombadier **Dam:** Ch Frogwyck Shalimar
Breeder/Owner: C & L Borg
- 66. KIANGSI SHOWEM HOW ITS DONE** 5100074125 **DOB:** 4/02/2013
Sire: Gr Ch Pendragan Showem How **Dam:** Ch Kiangsi Aeon Flux
Breeder/Owner: A Cadd
- 67. LECARBUL LA PETITE BEAUTE NOIR** 2100380994 **DOB:** 28/03/2013
Sire: CH Lavishcav Terry Bear **Dam:** Chocos Delight
Breeder/Owner: S & D Carter
- 68. LECARBUL LA PETITE FEME FATALE** 2100372962 **DOB:** 22/10/2012
Sire: Mjosa La Fantome Auteur **Dam:** Redgladiator Sarce
Breeder/Owner: S & D Carter
- 69. SANCERRE PETIT BONNE FEMME** 2100377353 **DOB:** 5/1/2013
Sire: Pendragan Right Said Fred **Dam:** Jasjay Tu Bitire Tu
Breeder/Owner: M Duncan
- 70. PENDRAGAN ULTIMATE BLONDE (AI)** 2100381864 **DOB:** 31/03/2013
Sire: Soeluegas Copyright Slaviero Bull (Che) **Dam:** Ch Pendragan Hard To Get
Breeder/Owner: K Hedberg & S O'Rourke
- 71. CH OPALGUARD WE GOT GOLD** 2100374411 **DOB:** 12/12/2012 **Absent**
Sire: Ch Mjosa Pierre Renoir **Dam:** Ch Glenlee Eternal Secret (UK)
Breeder/Owner: N Kenwick
- 72. CH EMORETTE BABY SHES GOT IT** 2100382040 **DOB:** 3/04/2013
Sire: Ch Emorette Rolls Royce **Dam:** Emorette Black Velvet
Breeder/Owner: K McAndrew
- 73. TRICIBWTHYN SARSPARELLA** 2100379314 **DOB:** 11/02/2013
Sire: Sup Ch D'Accord Jean Claude **Dam:** Tricibwthyn Edna
Breeder/Owner: R Parry



74. **DACCORD CHARISMATIQUE COLETTE** 2100379741 **DOB:** 14/02/2013
Sire: Gr Ch Isidore-Ignatius Beau De Soleure (Imp Sui) **Dam:** Daccord Charismatique Charme **Breeder/Owner:** L Davidson & M Rosser
75. **WARPAINT SOME VELVET MORNING** 2100376759 **DOB:** 30/12/2012
Sire: Multi Ch Vicking Du Farce De Montparnasse
Dam: Bullkrazy A Peinture Deguerre **Breeder/Owner:** D & L Thorpe & J Daidone

1st**72**..... 2nd**74**..... 3rd**67**.....

Notes



ADULT DOGS FROM 12 MONTHS

Industry leaders in tailor-made breed nutrition

IDEAL MUSCLE MASS

HEALTHY SKIN

ODOUR REDUCTION

Exclusive kibble

OMEGA 3 – PROTEIN 26%

The French Bulldog formula has been specifically designed to help maintain muscle mass and stimulate fat metabolism. With an optimal protein level of 26% and reinforced with L-carnitine, this exclusive Royal Canin formula also includes added ingredients and science to maintain optimal digestibility to help reduce flatulence and bad smelling stools.

✓ **Joint Support**

Helps maintain cartilage and joint health with glucosamine and chondroitin sulphate and Omega 3 fatty acids.

✓ **Odour Reduction & Digestion**

Ensures optimal digestion and intestinal flora balance from L.I.P proteins and enriched with fructo-oligo-saccharides. Reducing intestinal fermentation helps to combat flatulence and bad smelling stools.

✓ **Exclusive Kibble Shape for the Brachycephalic Jaw**

Specifically designed shape to make it easier for the French Bulldog to pick up the kibble and encourage chewing to maintain good dental hygiene.

Feeding Guide

Dog Weight		Normal activity		Activity	
(g)		cup		cup	
8 kg	111 g	1+3/8		129 g	1+4/8
9 kg	122 g	1+4/8		141 g	1+5/8
10 kg	132 g	1+5/8		152 g	1+6/8
11 kg	141 g	1+5/8		164 g	2
12 kg	151 g	1+6/8		175 g	2+1/8
14 kg	169 g	2		196 g	2+3/8

cup = 240 ml (= 84 g)



ROYAL CANIN

ROYAL CANIN AUSTRALIA Pty Ltd

PO Box 4096 Mulgrave VIC 3170

☎ 1300 657 021 | 📠 1300 657 028

✉ enquiries@royalcanin.com.au | www.royalcanin.com.au

© Royal Canin SAS 2012. All rights reserved. Photographers: Labat/Rouquette.

TGM6923/12/2

ROYAL CANIN

Proudly
Supporting



Class 5a Intermediate Bitch**Entries 10**

76. **BOUDIN THE BEAN** 2100358143 **DOB:** 9/09/2011 **Sire:** Ch & Am Ch Daulokke's Jargon De Luc (imp Den) **Dam:** Ch Boudin Petite Bette Noir
Breeder/Owner: J Butler
77. **BRATRICE TIGER LILLY** 2100359485 **DOB:** 18/2/2012
Sire: Bonzabull Bubba Kush **Dam:** Bratrice Que Sera Sera
Breeder: G & S Edmunds **Owner:** M Clinton
78. **CH JONHAH TAYLOR MADE** 2100367008 **DOB:** 25/7/2012
Sire: Ch Pendragan Quiet Riot **Dam:** Ch Jonhah Coral Taylor
Breeder/Owner: D Paine & S Ledger
79. **TYKABUL DOROTHY LAMOUR** 2100363692 **DOB:** 16/05/2012 **Absent**
Sire: Tykabul Wizzkid **Dam:** Topette Im a Lady I Am
Breeder: J Lalor **Owner:** D & N Mackie
80. **CH BULLECOURT SPIRIT** 3100255425 **DOB:** 24/4/2011 **Absent**
Sire: Ch Belcoulecan Casino Royale (Imp Can)
Dam: Rischale Aretha at Morvern (Imp UK) **Breeder/Owner:** A McInnes
81. **LLACHAR KEY TO THE FUTURE** 4100218463 **DOB:** 20/9/2012 **Absent**
Sire: Am Ch Ch Fabelhaft Robobull Smokin' Hot (Imp USA)
Dam: Llachar Heavenly Scent **Breeder/Owner:** L & K McClelland
82. **KELZAK IRIDESCENT** 3100278893 **DOB:** 22/9/2012
Sire: Ch Amindi Chuck Berry Ison Top **Dam:** Ch Marivan Champ D Roh Bele
Breeder/Owner: R Ross
83. **LEPRIDE LADY OF SHALOTT** 2100355383 **DOB:** 14/1/2012
Sire: Ch Belboulecan Casino Royale (Imp Can) **Dam:** Ch Lepride Dita Von Tesse
Breeder/Owner: G Skinner
84. **CH SWIFDELIGHT FRENCH DU JOUR (AI)** 4100218842 **DOB:** 31/08/2012
Sire: Ch Edelweis For Palevyh Bulldogov (imp USA) **Dam:** Ch Swifdelight Le Diamant
Owner/Breeder: D Swift



85. **CH BOROCCABULL BINDI EYE** 2100339983 **DOB:** 6/5/2011
Sire: Natmons Super Milo **Dam:** Eeya Snoopy Jo
Breeder/Owner: J Vassallo

1st**83**..... 2nd**78**..... 3rd**84**.....

Class 10a Aust Bred Bitch

Entries 14

86. **BRIGANTIA PARISIAN SUNRISE** 3100264900 **DOB:** 20/10/2011
Sire: Ch Frogwyck Alpha Centauri **Dam:** D'Accord Pascale Paradise
Breeder: M McCurrach **Owner:** V Bradford
87. **CH FROGWYCK MARGEAX** 2100333100 **DOB:** 16/12/2010
Sire: Der Mickleover Harum Scarum (Imp Malta) **Dam:** Ch D'Accord Faberge
Breeder/Owner: C & L Borg
88. **TOPETTE BELLE MARIE** 2100365569 **DOB:** 20/6/2012 **Absent**
Sire: Hushan Karbe Kohl **Dam:** Topette Abigail
Breeder/Owner: T & G Cartwright
89. **CHICCHIEN A TOUCH OF CLASS** 2100366393 **DOB:** 26/6/2012
Sire: Ch Pendragan Quiet Riot **Dam:** Chicchien Fleur De Soliel
Breeder: R Doherty **Owner:** C Frazer
90. **ELLUJE YOU AND WHOS ARMY** 2100341894 **DOB:** 5/5/2011
Sire: Gr Ch Isidore-Ignatius Beau de Soleure (Imp Sui)
Dam: Sylvenus Lika Bat Outa Hell **Breeder/Owner:** J & E Henville

91. **TYKABUL GOOD AS GOLD** 2100348647 **DOB:** 27/09/2011 **Absent**
Sire: Perreux Ambassador **Dam:** Ch Brebbie Bold as Brass
Breeder: J Lalor **Owner:** D & N Mackie
92. **GR CH EMORETTE MISS EADEE** 2100334161 **DOB:** 22/12/2010
Sire: Am Ch Ch Daulokke's Jargon De Luc (Imp Den) **Dam:** Pendragan Caboodle
Breeder/Owner: K McAndrew
93. **BRIALLEN ALL TOO SWEET** 2100373862 **DOB:** 20/9/2012
Sire: Gr Ch Pendragan Ell Bent **Dam:** Pendragan Okey Dokey
Breeder/Owner: B Miniter
94. **CH TRICIBWTHYN EDNA** 2100316685 **DOB:** 30/3/2010
Sire: Ch D'Accord Bergerac **Dam:** Ch Tricibwthyn Peggy Sue
Breeder/Owner: R Parry
95. **CH BULLECOURT BEAUTIFUL DAWN** 3100255771 **DOB:** 1/05/2011
Sire: Ch Belboulecan Stargazer Zodiac (Imp Can) **Dam:** Twinhoe Adelaide At Morvern (Imp UK) **Breeder:** A McInnes **Owner:** V Scott
96. **CH LEPRIDE ZOE SCARLETT** 2100290421 **DOB:** 9/02/2009
Sire: Gr Ch Isidore-Ignatius Beau De Soleure (imp Sui) **Dam:** Ch D'Accord Faire Lamour **Breeder/Owner:** G Skinner
97. **KEOILoa MYALEE** 2100334716 **DOB:** 3/12/2010
Sire: Ch Tykabul Ming Dynasty **Dam:** Tykabul Blanche L Etoile
Breeder/Owner: K Stevens
98. **SWIFTDELIGHT LE DIAMANT** 4100193628 **DOB:** 17/11/2010
Sire: Ch Belboulecan Casino Royale (Imp Can) **Dam:** Ch Oriana Janoel (Imp Cze)
Breeder/Owner: D Swift
99. **WARPAINT KISSED BY A ROSE** 2100376760 **D.O.B:** 30/12/2012
Sire: Int-Fr-Ger-Lux-Ita Ch Vicking Du Farce De Montparnasse
Dam: Bullkrazy A Peinture Deguerre **Breeder/Owner:** D & L Thorpe & J Daidone

1st92..... 2nd96..... 3rd98..... 4th99..... 5th87.....

11a Open Bitch

Entries 7

100. **CH EMBOLDEN BELLA VISTA** 2100326198 **DOB:** 20/07/2010
Sire: Der Mickleover Harum Scarum (imp Malta) **Dam:** Ch Frogwyck Arabella
Breeder: R & N Taylor **Owner:** C & L Borg
101. **CH FROGWYCK ANDROMEDA** 2100270328 **DOB:** 2/03/2008
Sire: Gr Ch Isidore-Ignatius Beau De Soleure (imp Sui) **Dam:** Ch Frogwyck Stella Luna
Breeder/Owner: C & L Borg
102. **CH KIANGSI SHOWEM IM DIVINE** 5100074124 **DOB:** 4/02/2013
Sire: Gr Ch Pendragan Showem How **Dam:** Ch Kiangsi Aeon Flux
Breeder/Owner: A Cadd
103. **CH PENDRAGAN OOPS A DAISY** 2100318598 **DOB:** 4/5/2010
Sire: Ch Belboulecan Casino Royale (Imp Can) **Dam:** Ch Pendragan Hard to Get
Breeder: K Hedberg & S O'Rourke **Owner:** S O'Rourke & K Hedberg
104. **PENDRAGAN QUEEN OF TARTS** 2100337680 **DOB:** 11/3/2011
Sire: Pendragan Original Sin **Dam:** Ch Pendragan Chase the Wind
Breeder: K Hedberg & S O'Rourke **Owner:** M Knight
105. **CH JONHAH TILLY DEVINE** 2100341434 **DOB:** 18/5/2011
Sire: Gr Ch D'Accord Beau Geste **Dam:** Jonhah Stephie Gilmour
Breeder/Owner: D Paine & S Ledger
106. **PENDRAGAN OKEY DOKEY** 2100318599 **DOB:** 4/5/2010
Sire: Ch Belboulecan Casino Royale (Imp Can) **Dam:** Ch Pendragan Hard to Get
Breeder: K Hedberg & S O'Rourke **Owner:** B Miniter, S O'Rourke, K Hedberg
107. **CH TRICIBWTHYN GWENITH GWYN** 2100332301 **DOB:** 10/12/2010
Sire: Gr Ch Isidore-Ignatius Beau de Soleure (Imp Sui) **Dam:** Ch Frogwyck Galaxy Girl
Breeder/Owner: R Parry
108. **CH D'ACCORD LA VIE EN ROSE** 2100334867 **DOB:** 17/1/2011 **Absent**
Sire: Ch Belboulecan Casino Royale (Imp Can) **Dam:** Ch D'Accord Couleur D'Automne
Breeder/Owner: M Rosser & L Davidson



109. **CH LEPRIDE DITA VON TESSE** 2100290421 **DOB:** 9/2/2009
Sire: Gr Ch Isidore-Ignatius Beau de Soleure (Imp Sui) **Dam:** D'Accord Faire L'Amour
Breeder/Owner: G Skinner
110. **CH ORIANA JANOEL (Imp CZ)** CMKU/FB/5668/08 **DOB:** 10/12/2008 **Absent**
Sire: CZ Ch Bloom Orlando Du Terroir De Frontfroide (Imp Fra)
Dam: Zyzzy Janoel (Imp Cze) **Breeder:** L Sosnova **Owner:** D Swift
111. **SWIFDELIGHT QUICKSILVER DAME** 4100135856 **DOB:** 22/8/2012
Sire: Ch Ferrari De Hunterbull (Imp Cze) **Dam:** Ch Oriana Janoel (Imp Cze)
Breeder/Owner: D Swift

1st **101** 2nd ... **105** 3rd **106**

Challenge Bitch **92**

Reserve Challenge Bitch **64**



18 Neuter Dog

Entries 2

112. **NEUT CH ELLUJE DAMAGE CONTROL** 2100341891 **DOB:** 5/05/2011
Sire: Gr Ch Isidore-Ignatius Beau De Soleure (Imp Sui) **Dam:** Sylvenus Lika Bat Outa Hell **Breeder/Owner:** J & E Henville
113. **CH LLACHAR GHOSTS OF CAMELOT** 4100186639 **DOB:** 28/05/2010
Sire: Gr Ch Pendragan Ell Bent **Dam:** Ch Llachar Elegant Cliche ET
Breeder/Owner: L & K McClelland

1st ... **112**..... 2nd ... **113**.....

18a Neuter Bitch

Entries 6

114. **CH VANFRAHNCE SATEEN** 2100270465 **DOB:** 22/02/2008
Sire: Gr Ch Isidore-Ignatius Beau De Soleure (Imp Sui) **Dam:** D'Accord Tatiana
Breeder/Owner: D Brady
115. **CH BOUDIN PETITE BETTE NOIR** 2100284924 **DOB:** 10/08/2008
Sire: CH. Belboulecan Stargazer Zodiac **Dam:** Tricibwthyn Isabella
Breeder/Owner: J Bulter
116. **CH LLACHAR ETOILE DU BERGER** 2100286880 **DOB:** 22/12/2008
Sire: Ch Tykabul Henri Matisse **Dam:** Ch Tykabul Chiraz Pour Moi
Breeder/Owner: L & K McClelland
117. **CH TYKABUL CHIRAZ POUR MOI** 2100256904 **DOB:** 4/08/2007
Sire: Gr Ch Isidore-Ignatius Beau De Soleure (Imp Sui) **Dam:** Ch Tykabul All About Mimi **Breeder/Owner:** L & K McClelland
118. **NEUT CH RISCHALE ARETHA AT MORVERN** AG03753804 **DOB:** 29/07/2006
Sire: Morvern Bart (UK) **Dam:** Luvmee Only In Rschale (UK)
Breeder: M & T Smith **Owner:** A McInnes
119. **CH ELLUJE DONT CRAMP MY STYLE** 2100341892 **DOB:** 5/05/2011
Sire: Gr Ch Isidore-Ignatius Beau De Soleure (Imp Sui) **Dam:** Sylvenus Lika Bat Outa Hell **Breeder:** J & E Henville **Owner:** M Orfanos
- 1st **116**..... 2nd **117**..... 3rd **118**.....

56th Championship show

Best in Show32.....

Runner-up Best in show92.....

Baby Puppy in Show.....2.....

Opposite Baby Puppy48.....

Minor Puppy in.....56.....

Opposite Minor Puppy.....

Puppy in Show.....64.....

Opposite Puppy.....7.....

Junior in Show.....13.....

Opposite Junior.....72.....

Intermediate in Show.....25.....

Opposite Intermediate.....83.....

Aust bred in Show.....32.....

Opposite Aust Bred92.....

Open in Show.....43.....

Opposite Open101.....

Neuter in Show.....116.....

Opposite Neuter....112.....



Breeder's Group

120. **Bullecourt Kennels** – Angela McInnes - 310003207

121. **Frogwyck Kennels** – C & L Borg - 2100022316

122. **Llachar Kennels** – L & K McClelland - 4100126835

123. **Swifedelight Kennels** – David Swift – 4100135856

Absent

1st **121**.....

Sire's Progeny

124. Gr Ch Pendragan Showem How

125. Ch Emorette Rolls Royce

126. Ch Amindi Chuck Berry Ison Top

Absent

1st **124**.....

Property Classes

9. KIANGSI SHOW EM YOUR GUNS

10. AM CH BARING NORDS THRYGGVE VIKING

17. WILDBUNCH GIORGIO ARMANI

18. CH LECARBUL LOUIE LE GRANDE

26. VANFRAHNCE KASPIAN

30. CH LLACHAR IRRATIONAL MOVE

33. Ch BULLECOURT SOVEREIGN

37. GR CH PENDRAGAN SHOWEM HOW

41. CH & UK CH SARABAR CONTINENTAL AFFAIR AT GLENLEE (IMP UK)

48. KIANGSI SHOWEM HOWTO CELEBRATE

66. KIANGSI SHOWEM HOW ITS DONE

68. LECARBUL LA PETITE FEME FATALE

- 85. CH. BOROCABULL BINDI EYE
- 86. BRIGANTIA PARISIAN SUNRISE
- 87. CH FROGWYCK MARGEAUX
- 100. CH EMBOLDEN BELLA VISTA
- 102. CH KIANGSI SHOWEM IM DIVINE
- 113. CH VANFRAHNCE SATEEN
- 115. CH LLACHAR ETOILE DU BERGER

Entries are accepted on the day but must be paid to the show secreatry before the start of general specials. \$5 per dog enables entry into 3 of the 5 property classes.

1. Best Head ...**100**.....

2. Best Gaited**41**.....

3. Best Fawn colour ...**33**.....

4. Best Brindle colour ...**37**.....

5. Best Pied Markings ...**48**.....



Best in Show April 2013

CH EMORETTE ROLLS ROYCE

D.O.B. 30/09/2011

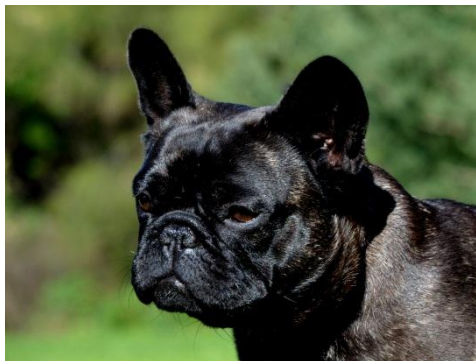
Sire: Ch Belboulecan Casino Royale (Imp Can)

Dam: Ch Emorette Maggie May

Breeder/Owner: K McAndrew



Runner-up Best in Show April 2013



CH FROGWYCK MARGEAX

D.O.B. 16/12/2010

Sire: Der Mickleover Harum Scarum (imp Malta)

Dam: Ch D'Accord Faberge

Breeder/Owner: C & L Borg

September Shows!

French Bulldog Cub of NSW Inc.

57th Championship Show

Commences: 9.00 am

Date: Saturday 13th September 2014

Venue: Ring 2 Erskine Park

Judge: Mrs Janice Pardue (USA)

Entry Fees: \$20 first entry \$17 subsequent entries

Non-members \$20 per class

Baby class \$10

Open Show

Commences: 10.00am

Date: Sunday 14th September 2014

Venue: Ring 2 Erskine Park

Judge: Jan Seary (NSW)

Entry fees: Members \$8

Non-Members \$9

Two Non-sporting Club shows will be held on the same day as our Open show.

Lookout for the show schedule later this year. 3 Championship

Shows at 1 location, in 1 weekend!



The French Bulldog Club of QLD Championship show

CCCQ Showgrounds (Dogs QLD) King Avenue, Durack QLD

Saturday 3rd May 2014

Judging commencing at 8.30am

ENTRIES CLOSE: Friday 18th April 2014

Judge: Mr WF (Bill) Stevenson (NSW)

CLASSES 1, 2, 3, 4, 5, 9, 10, 11 & 18 (dogs & bitches), Property Classes

Property Classes: Best Head, Best Gaited, Best Brindle, Best Pied, Best Fawn

ENTRY FEES:

\$15.00 first entry / subsequent entries for Members - \$12.00 per class

Non members - \$15.00 per class

Property Classes - \$5.00 (one fee per dog)

Catalogues \$5.00 prepaid with entry

The French Bulldog Club of QLD Open show

CCCQ Showgrounds (Dogs QLD) King Avenue, Durack QLD

Saturday 3rd May 2014

Judging commencing at 1pm

(or 30 minutes after the conclusion of the Champ Show)

ENTRIES CLOSE: Friday 18th April 2014

Judge: Mr Jason Attridge (QLD)

CLASSES 1, 2, 3, 4, 5, 9, 10, 11 & 18 (dogs & bitches)

ENTRY FEES: \$12.00 first entry

Subsequent entries for Members - \$10.00 per class

Non members - \$12.00 per class

Catalogues \$3.00 prepaid with entry

Post entries to: Show Secretary

PO Box 729, Oxenford QLD 4210 / Ph: Nick Abela 0413 415 146 (before 8.00pm)

Please Note: A stamped self-addressed envelope must be enclosed. Cheques made payable to THE FRENCH BULLDOG CLUB OF QUEENSLAND



Proudly
Supporting



THE FRENCH BULLDOG CLUB OF NSW INC - CODE OF ETHICS

1._____I shall ensure that at all times the dogs under my control are properly housed, fed, watered, regularly wormed and kept in good condition. All dogs shall receive proper veterinary attention if and when required.

2._____I shall not allow any dogs under my care to roam at large and when in public I will ensure they are under effective control at all times. I will ensure that my dogs are kept in a secure and fully fenced environment.

3._____I shall only breed for the purpose of maintaining or improving the quality and health of the breed, which may include participation in hereditary diseases programmes.

a) I shall not breed from any bitch before she is twelve (12) months of age.

b) I shall not breed from the same bitch more than two (2) consecutive seasons without a twelve (12) month break (the definition of 'breed' means date of mating).

4._____I will not breed more than 4 litters from any individual bitch.

5._____I shall not breed from any male under twelve (12) months of age.

6._____I shall not advertise any male for stud purposes until the dog has been health screened over the age of twelve (12) months and has obtained all the relevant health certificates required for the breed at the time.

7._____Recommended Breeding Practices

(a) X ray spines for major defects prior to breeding. Defects include hemi-vertebrae, kinks and distortions of the spine. Screening for long term stability of the spine.

(b) X ray for hip dysplasia prior to breeding.

For breeding purposes spine and hip x rays should be taken when the dog is over 12 months of age.

8._____I shall not permit any of my pure bred dogs to be mated to a dog of a different breed, to a cross bred dog or to an unregistered dog of the same breed.

9.____I shall not knowingly register progeny on the Main Register which does not conform to the breed's accepted colours at the time of registration.

10.____I shall not transfer from my care any puppy under eight (8) weeks of age. All puppies must be vaccinated and microchipped in compliance with relevant State regulation, prior to leaving the kennel.

11.____I shall approve of all persons acquiring dogs from me and ensure that they clearly understand their responsibility for the care and welfare of the French Bulldog breed and that they have the time and adequate facilities to properly care for their dogs.

12.____I shall provide to all purchasers of dogs or dogs placed by me, written details of all health issues, dietary, worming and vaccination requirements as well as pedigree registration details.

13.____As a breeder I shall not knowingly misrepresent the characteristics of the breed, nor falsely advertise or mislead any person regarding the health or temperament of any of my dogs. I shall also provide ongoing support and advice to purchasers of my dogs.

14.____I shall not knowingly sell any dog to commercial dog wholesalers, retail pet dealers or brokers directly or indirectly. I shall not allow my dog/s to be given as a prize or donation in a contest of any kind.

15.____In the event that I can no longer keep my French Bulldog for whatever reason, and I am having trouble rehoming my dog/s, I shall notify the breeder or The French Bulldog Club of NSW for assistance in rehoming.



Notes





<http://www.frenchbulldogclubnsw.asn.au/>

