

Newfoundland Club of Victoria Inc

2018 Championship Show

Judge Mr Stephen Kinsella (Kenamu) Ireland

9th June 2018  
State Dog Centre (Kcc Park)  
\* 9am Start

Entries close 1.6.18 (Online entries)  
24.5.18 (Postal entries)  
Veterans Parade Entries MUST be in by 5.5.18 to  
receive a personalized sash. NO EXCEPTIONS

Classes available—1, 2, 3, 4, 5, 10, 11  
Dogs and bitches  
Special Classes listed inside

Be sure to book for our Dinner Gala!! Not to be  
missed!

Show Sponsor - Ivory Coat





Newfoundland Club of Victoria Inc

2018 Championship Show

Judge Mr Stephen Kinsella (Kenamu) Ireland

Special Classes - \$5 each  
Best Cart (Opening the show at 9am)  
After all regular classes are completed -  
\* Best Marked Landseer  
Best Brown  
Best Headed Dog  
Best Headed Bitch  
Best Gaited  
Veterans Parade

Note: Dogs under 6 months of age cannot  
compete in Special Classes

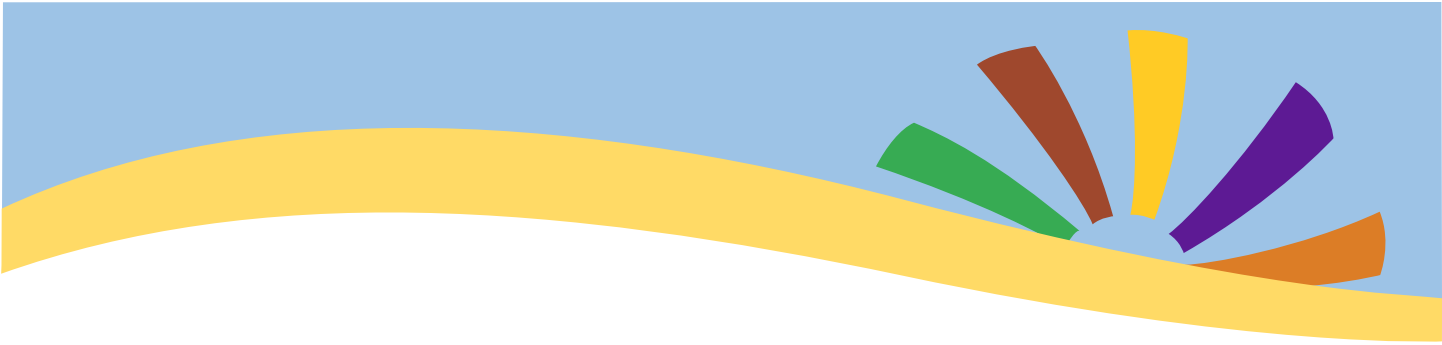
Online entries at [www.showmanager.com.au](http://www.showmanager.com.au)  
Postal entries to 11 Benson Street, Emerald 3782

Entry fees - First Entry \$25 (includes catalogue)  
Subsequent entries \$20, Baby Puppies \$20 (if  
only entry, add \$3)

Catalogue purchased on the day \$10



**IVORY COAT™**  
COMPANION GOODS



Newfoundland Club of Victoria Inc

2018 Championship Show

Judge Mr Stephen Kinsella (Kenamu) Ireland

**DINNER GALA!**

Be sure to book for our Presentation Dinner  
Gala!

7pm at KCC Park (Room to be advised)

\$38 Per Person (all ages)

Bookings by 1st June

Spit Roast Dinner (Beef and Lamb)

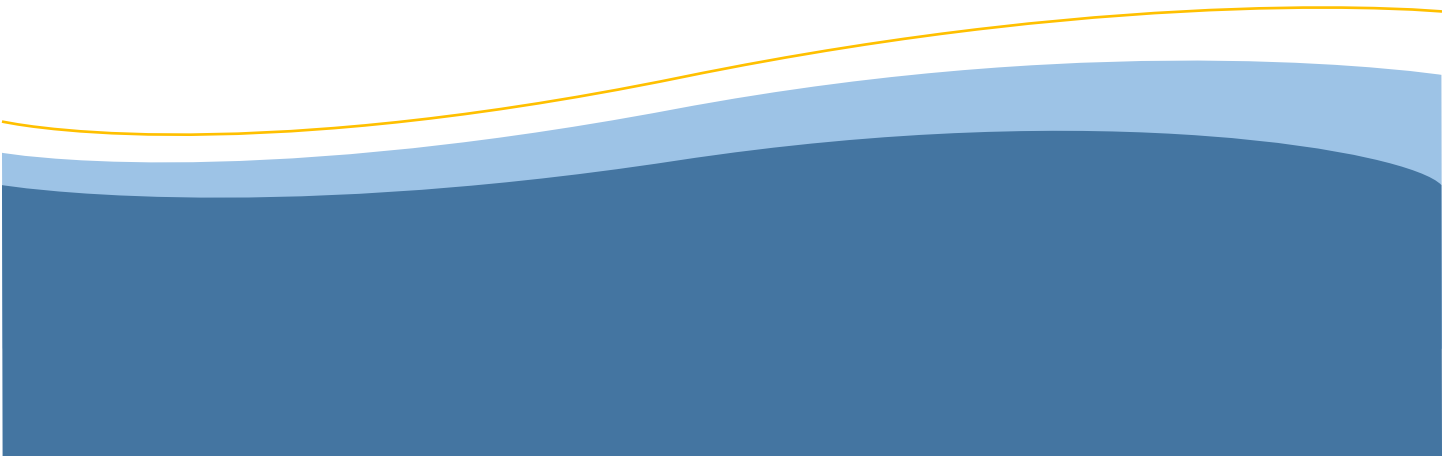
Roast Vegetables

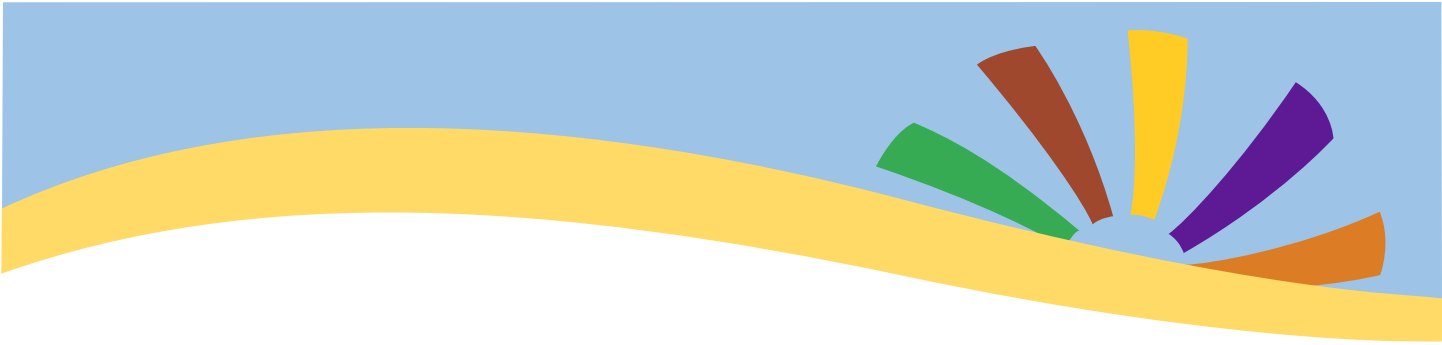
Dessert - Pavlova and Chocolate Mousse

Soft Drinks Provided

BYO Alcohol

We will have our popular Auctions, Brown Bag  
Auctions and Raffles so bring along lots of cash!!





Newfoundland Club of Victoria Inc  
2018 Championship Show

Judge Mr Stephen Kinsella (Kenamu) Ireland

**DINNER GALA!**

\* Postal Booking Form

Number of People Booking .....

Names of People booking.....  
.....  
.....

Contact Number .....

Special Dietary needs .....

Total Payment @ \$38 per person.....

Please post to 11 Benson Street  
Emerald 3782  
Victoria  
To arrive no later than 1st June

